

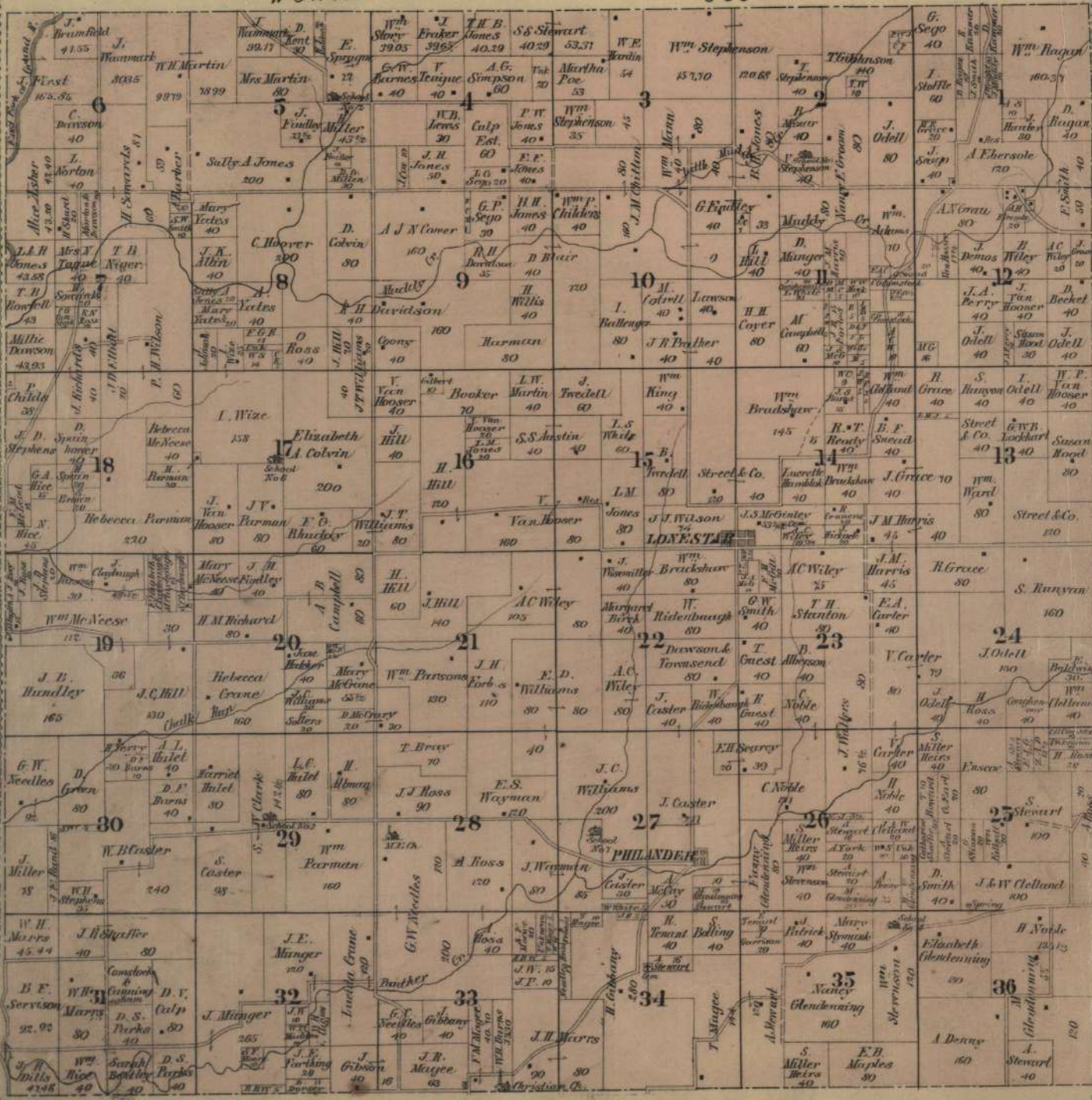
TOWNSHIP 64 NORTH RANGE 30 WEST

OF THE 5TH PRINCIPAL MERIDIAN.

Scale 2 Inches to the Mile.

WORTH

COUNTY

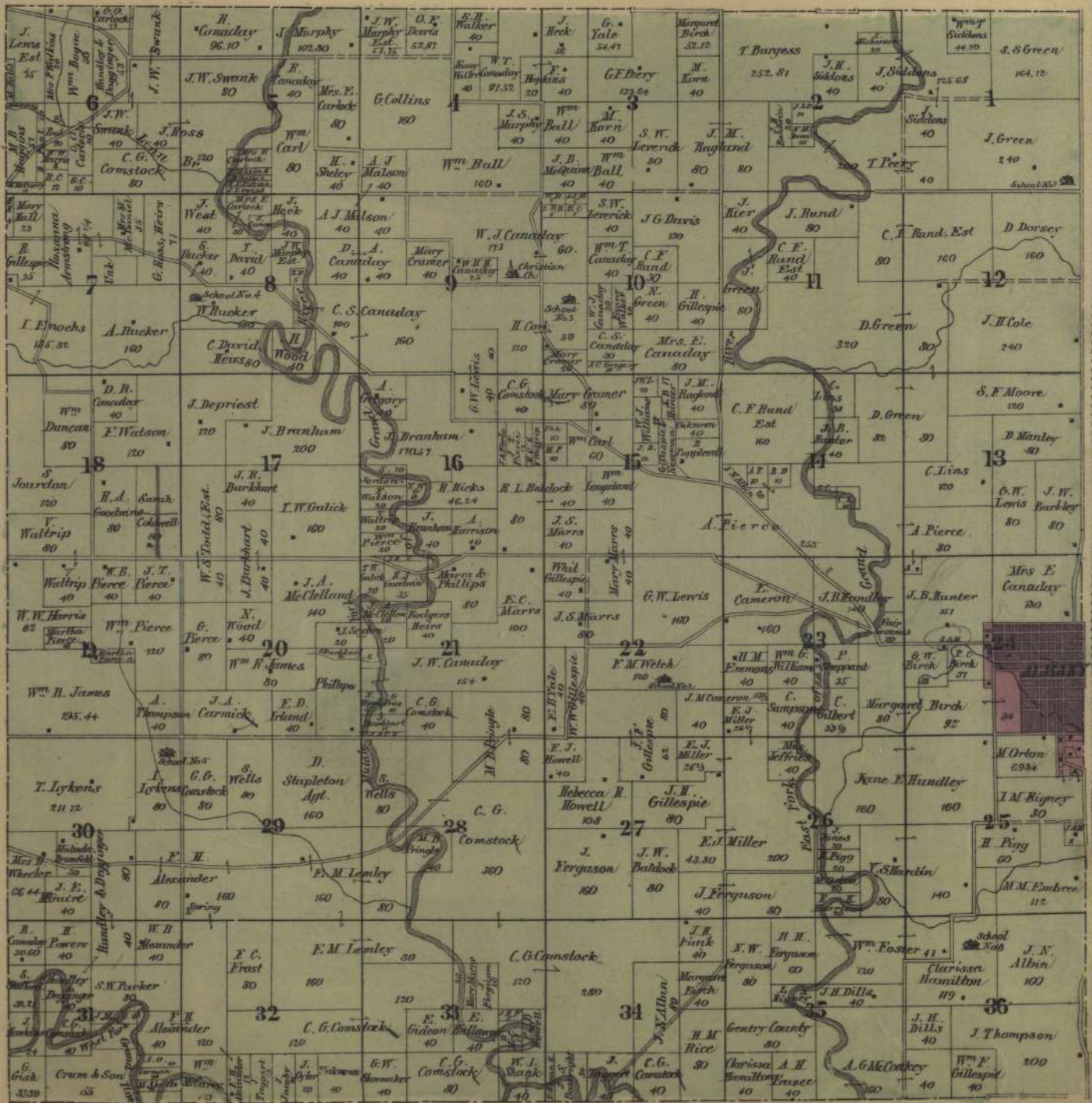


HARRIS

TOWNSHIP 63 NORTH RANGE 31 WEST

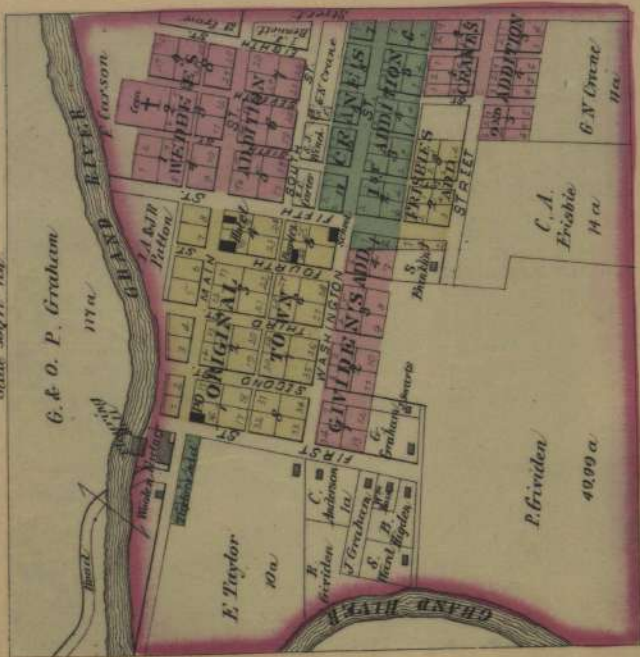
OF THE 5TH PRINCIPAL MERIDIAN.

Scale 2 Inches to the Mile.



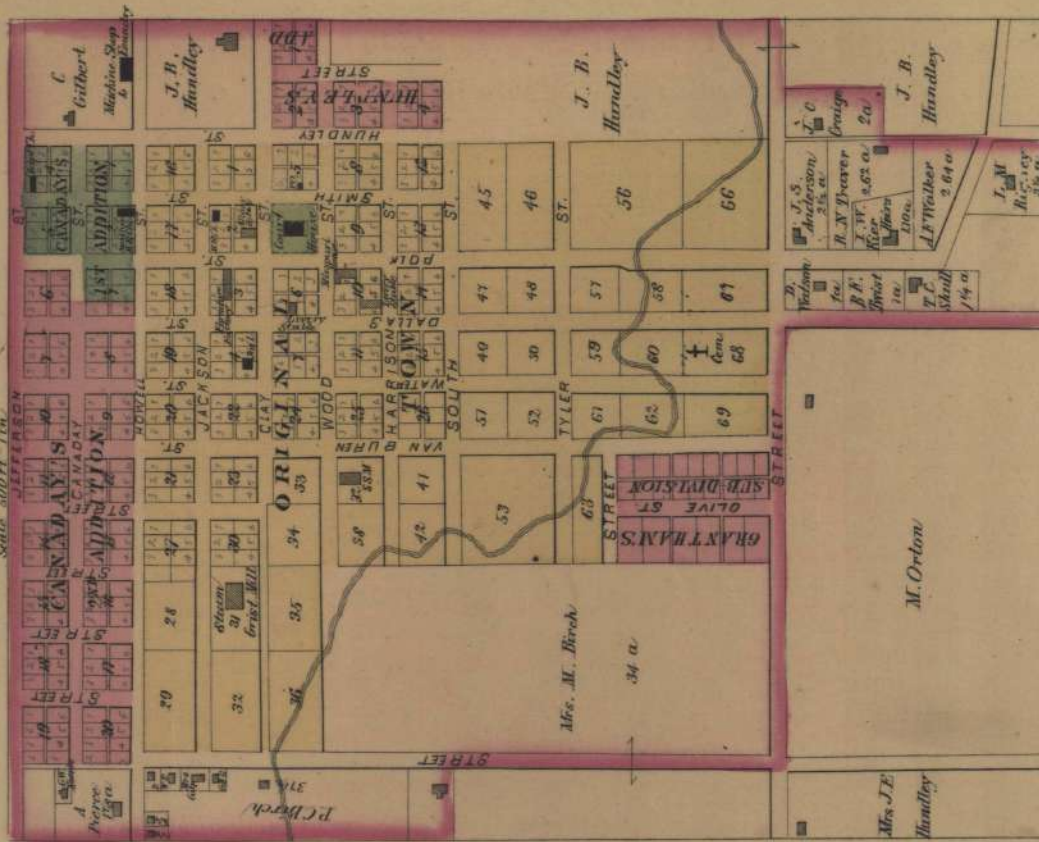
GENTRYVILLE

Scale 3200 ft. = 1 in.



ALBANY

Scale 5000 ft. = 1 in.



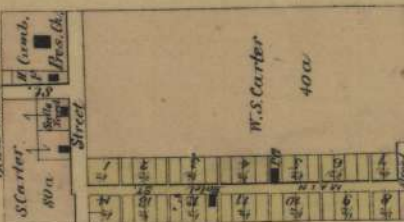
ALANTHUS

Scale 5000 ft. = 1 in.



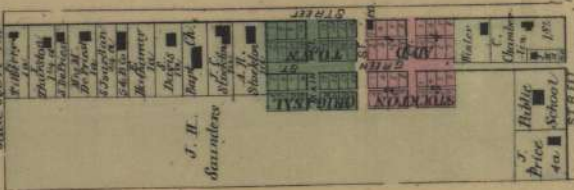
KING CITY

Scale 500 ft. = 1 in.



M. PLEASANT

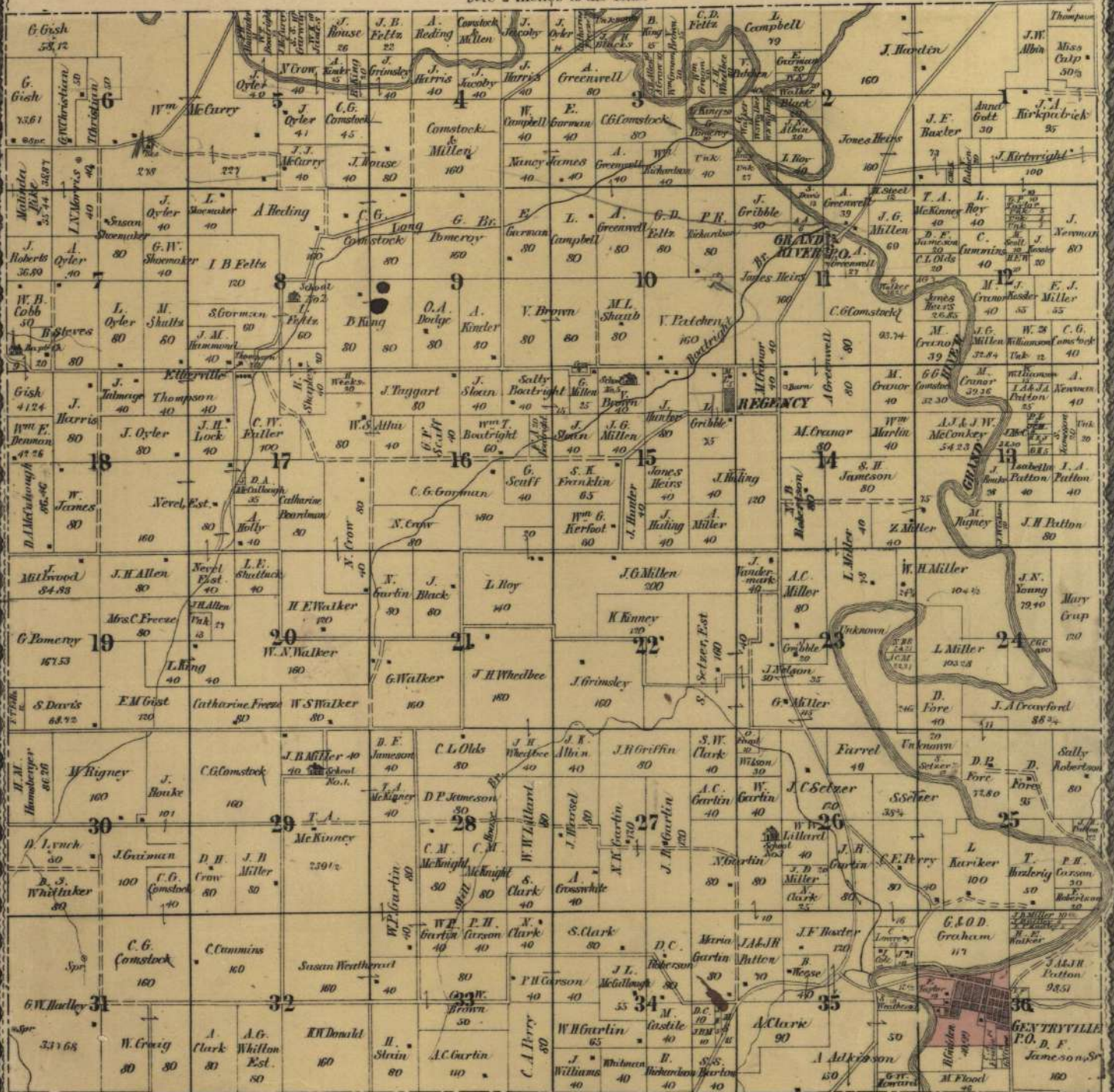
Scale 5000 ft. = 1 in.



TOWNSHIP 62 NORTH RANGE 31 WEST

OF THE 5TH PRINCIPAL MERIDIAN.

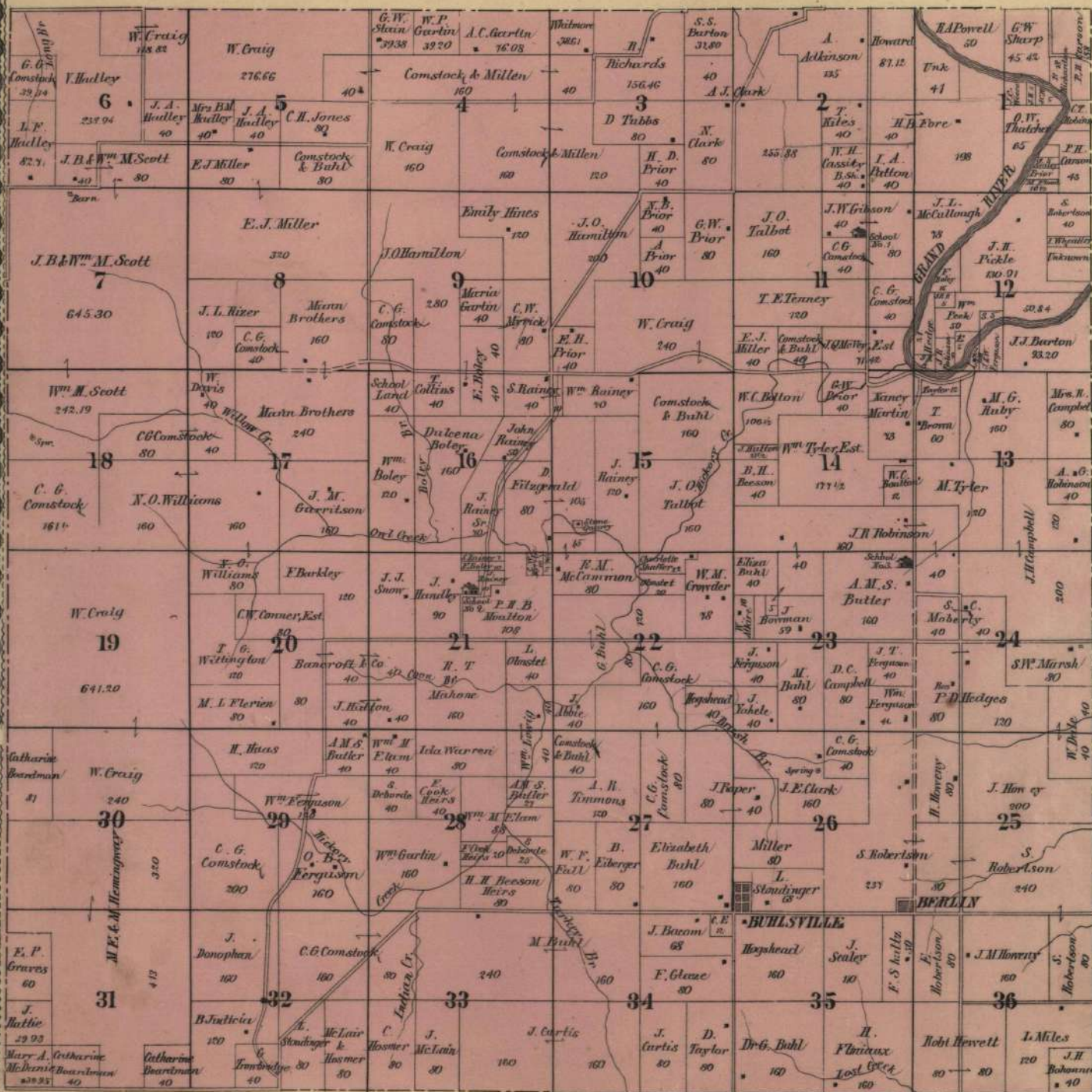
Scale 2 Inches to the Mile.



TOWNSHIP 61 NORTH RANGE 31 WEST

OF THE 5TH PRINCIPAL MERIDIAN.

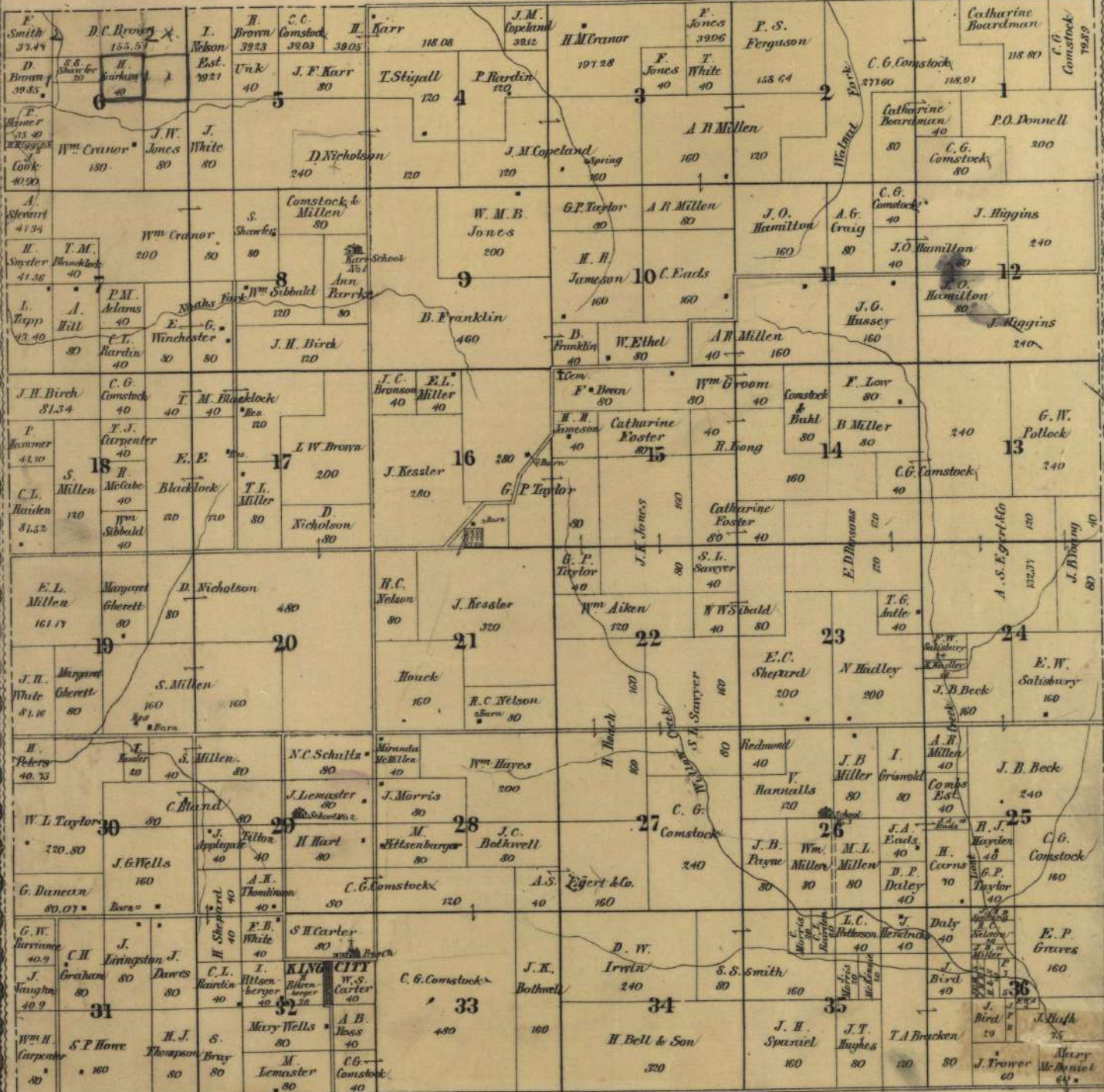
Scale 2 Inches to the Mile.



TOWNSHIP 61 NORTH RANGE 32 WEST

OF THE 5th PRINCIPAL MERIDIAN.

Scale 2 Inches to the Mile.



TOWNSHIP 62 NORTH RANGE 32 WEST

OF THE 5TH PRINCIPAL MERIDIAN.

Scale 2 Inches to the Mile.

