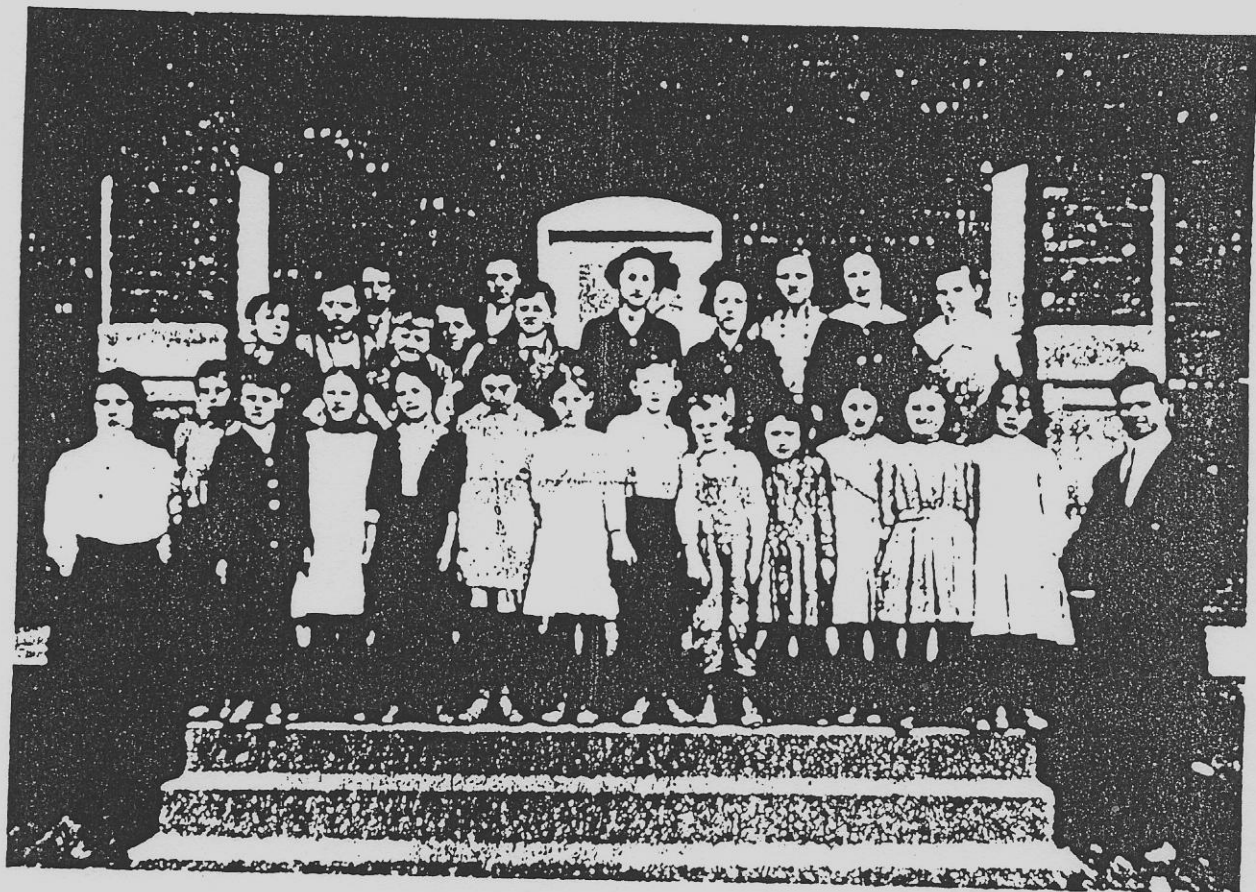


BOONVILLE DAILY NEWS

7 May 1968

2/3-6



The Bellair School, 1912-13 Term

School opened at Bellair, southwest of Boonville, in a new, two-story brick building in 1912. Harold Mitzel of 628 Krohn St., the owner of this photograph, said. A high school was operated in the district, No. 48 of Cooper County, probably from 1914 to 1916.

Miss Inez Sly (extreme left) and Maurice D. Mohler (right) taught the two rooms during the 1912-13 school year. Both are deceased. Mitzel identified the students as:

Standing in the first row, left to right,

Miss Sly, Ruby Maddex, Eugene Schlotzhauer*, Pauline Babbitt*, Nellie Pare*, Mildred McCarty, Bernice Slaughter, Elwood McClain, Walker Pare, Doris Mitzel, Geneva Sly, Earline Roberts, Olive McCarty*.

Second row, Joseph Bradshaw, Joe Roe, Harold Mitzel, Wilbur Pare, Roy Mitzel, Corene Mitzel*, Helen Sly, Anna Schild*, Mabel Babbitt, Ada Row.

Back row, Bany Maddex and Rolla Sly. Those whose names are followed by an asterisk are deceased.